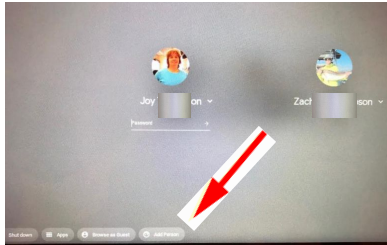


1

# Chromebook Login



When the Chromebook boots up, it may list a name, or you may have to go to the bottom and **Choose ADD PERSON**

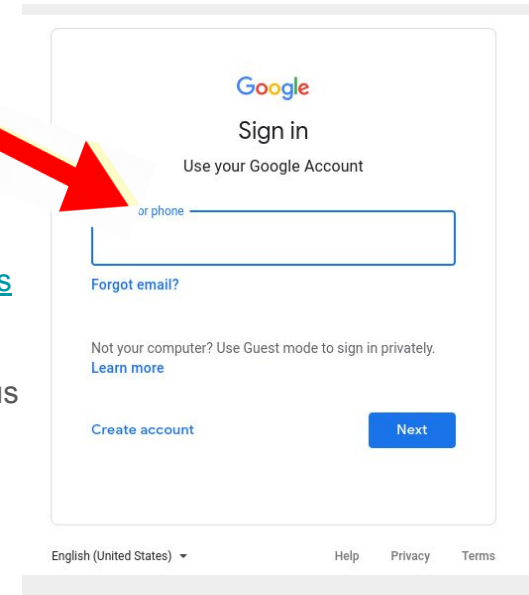


2

# Enter Student Google account

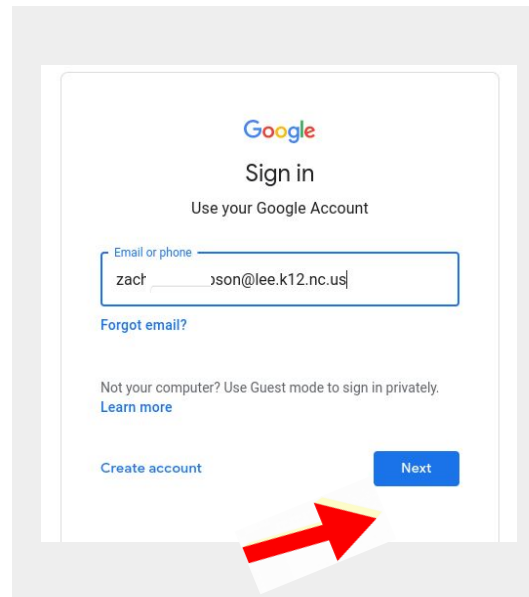
[firstname.lastname@lee.k12.nc.us](mailto:firstname.lastname@lee.k12.nc.us)

Example  
zacharyjohnson@lee.k12.nc.us



3

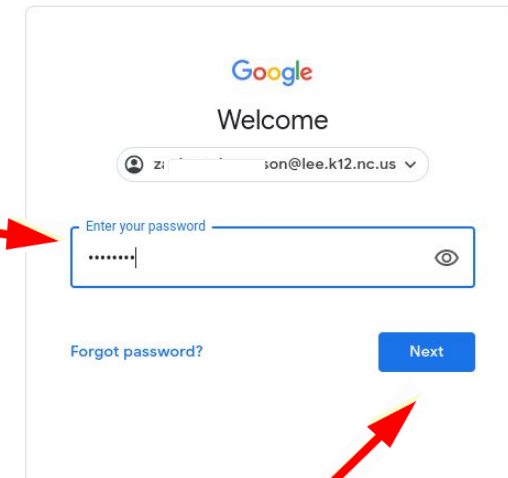
Click on Next



4

# Enter Password

Password is Student ID#  
(lunch # - 12345678)  
**Click NEXT**



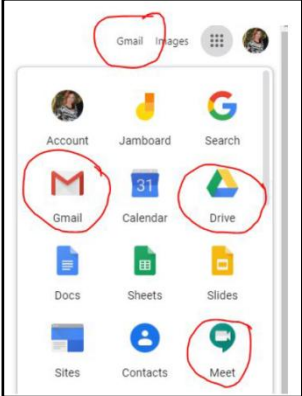


# Southern Lee High School

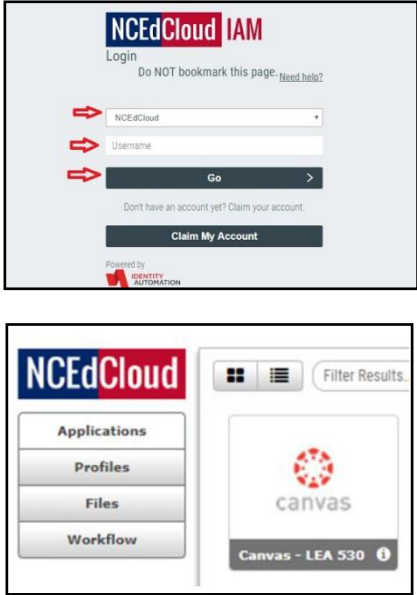
## Virtual Learning Access Information



### How do I access my student Google suite applications (Gmail, Google Drive, Google Meet)?

	<p><b>To access Gmail:</b></p> <ol style="list-style-type: none"> <li>1. Open Google Chrome.</li> <li>2. From the <a href="http://www.google.com">www.google.com</a> webpage, click on your app launcher. This looks like a gray Rubik's cube. Or you can click on the Gmail link at the top of the page.</li> <li>3. You will not need to sign in if you are already signed into your Chromebook.</li> </ol> <p><b>To access Google Drive and Google Meet:</b></p> <p>You can also access your Google Drive and Google Meet apps from the app launcher. You may need to scroll down to see your Google Meet icon.</p> <p>You may also access Meet by typing in <a href="http://meet.google.com">meet.google.com</a> in your address bar. You will need your teacher's code to join the Meet. Or, you can click on a link to a Google Meet session sent by your teacher.</p>
---	--

### How do I access PowerSchool and Canvas?

	<p>Both of these applications (PowerSchool and Canvas) are available through the <b>NCEdCloud website</b>.</p> <ol style="list-style-type: none"> <li>1. Go to <a href="http://my.ncedcloud.org">my.ncedcloud.org</a> or use the link on the school website.</li> <li>2. Log in.</li> </ol> <p><b>Your ID</b> is your PowerSchool number (your lunch number and your Gmail password).</p> <p><b>Your password</b> is something you set yourself. If you cannot remember your password you may click on the "Need Help?" link to reset your password. You can also email your teacher for a password reset.</p> <ol style="list-style-type: none"> <li>3. Once logged in, from your Rapid Identity screen, you will see icons that let you access Canvas and PowerSchool.</li> </ol> <p><b>Canvas:</b> The red/orange Canvas icon will take you to your Canvas dashboard to let you see your courses.</p> <p><b>PowerSchool:</b> The rainbow-colored "P" icon will take you to the PowerSchool Student Portal for you to see your schedule and your grades.</p>
--	--

### Additional Locations for Information:

<p>School Website: <a href="http://lee.k12.nc.us/southernlee">lee.k12.nc.us/southernlee</a></p> <ul style="list-style-type: none"> <li>Important news from school</li> <li>Student Handbook</li> <li>Teacher contact information</li> <li>Information about other school programs and resources for students</li> </ul> <p>School Twitter: <a href="https://twitter.com/SoLeeHS">twitter.com/SoLeeHS</a></p>	<div style="text-align: center;"> </div> <p style="text-align: center; font-size: small;">Receive important information for <b>YOUR GRADE LEVEL</b> by texting the codes below to join Remind.</p> <p style="text-align: center; font-size: x-small;">If you received information from Southern Lee last school year through Remind, you do not need to sign up again.</p> <p style="text-align: center; font-size: x-small;">Your information moved up to the next grade level with you!</p> <table style="width: 100%; text-align: center; font-size: small;"> <tr> <td><b>9<sup>th</sup> Grade</b></td> <td><b>11<sup>th</sup> Grade</b></td> </tr> <tr> <td>Text: @8h32f8</td> <td>Text: @cav22</td> </tr> <tr> <td>To: 81010</td> <td>To: 81010</td> </tr> <tr> <td><b>10<sup>th</sup> Grade</b></td> <td><b>12<sup>th</sup> Grade</b></td> </tr> <tr> <td>Text: @2023cav</td> <td>Text: @cav2021</td> </tr> <tr> <td>To: 81010</td> <td>To: 81010</td> </tr> </table>	<b>9<sup>th</sup> Grade</b>	<b>11<sup>th</sup> Grade</b>	Text: @8h32f8	Text: @cav22	To: 81010	To: 81010	<b>10<sup>th</sup> Grade</b>	<b>12<sup>th</sup> Grade</b>	Text: @2023cav	Text: @cav2021	To: 81010	To: 81010
<b>9<sup>th</sup> Grade</b>	<b>11<sup>th</sup> Grade</b>												
Text: @8h32f8	Text: @cav22												
To: 81010	To: 81010												
<b>10<sup>th</sup> Grade</b>	<b>12<sup>th</sup> Grade</b>												
Text: @2023cav	Text: @cav2021												
To: 81010	To: 81010												